

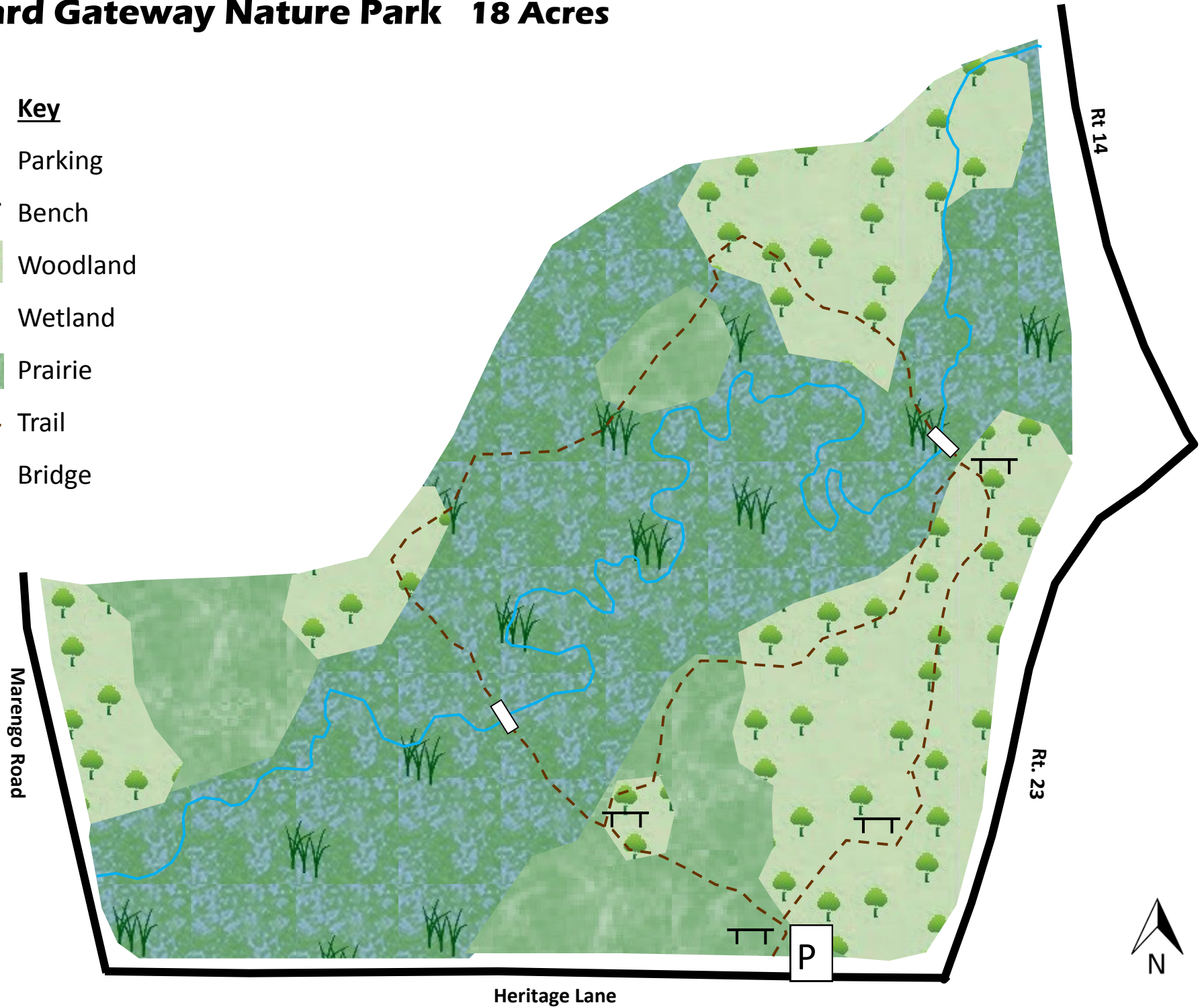


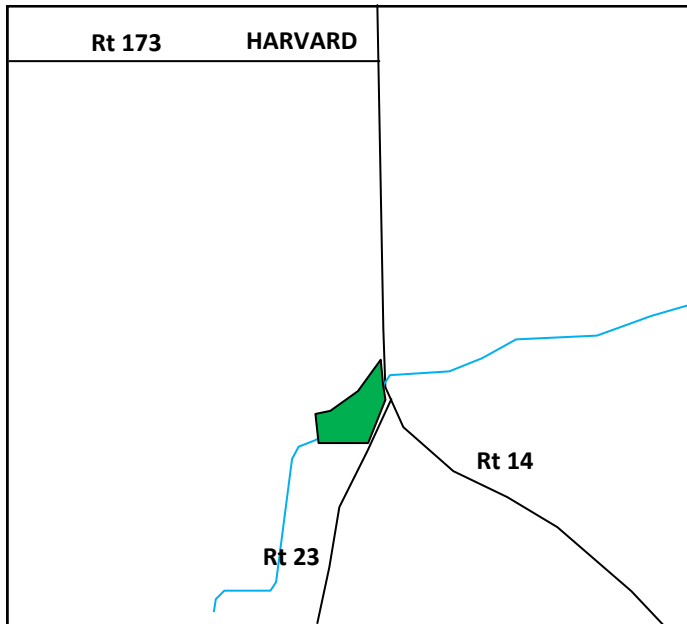
Harvard Gateway Nature Park 18 Acres

Key

- P Parking
- TT Bench
-  Woodland
-  Wetland
-  Prairie
- - - Trail
-  Bridge



SITE LOCATION



INFO AND HISTORY ABOUT SITE

As people drive into Harvard from the south on either Route 14 or Route 23, they pass by a truly remarkable bit of nature that sits right at the intersection. Oak groves sit on either side of the only part of Rush Creek that was never ditched. The creek winds back and forth across its floodplain, taking its own sweet time to get from Route 14 to Marengo Road.

A trail system and bridges are in place here, making for easy walking.

GENERAL RULES

Site hours are sunrise to sunset.

No alcohol.

Pets must be leashed at all times.

No camping.

No fires.

No removal or disturbance of any plant or animal life.



www.ConserveMC.org